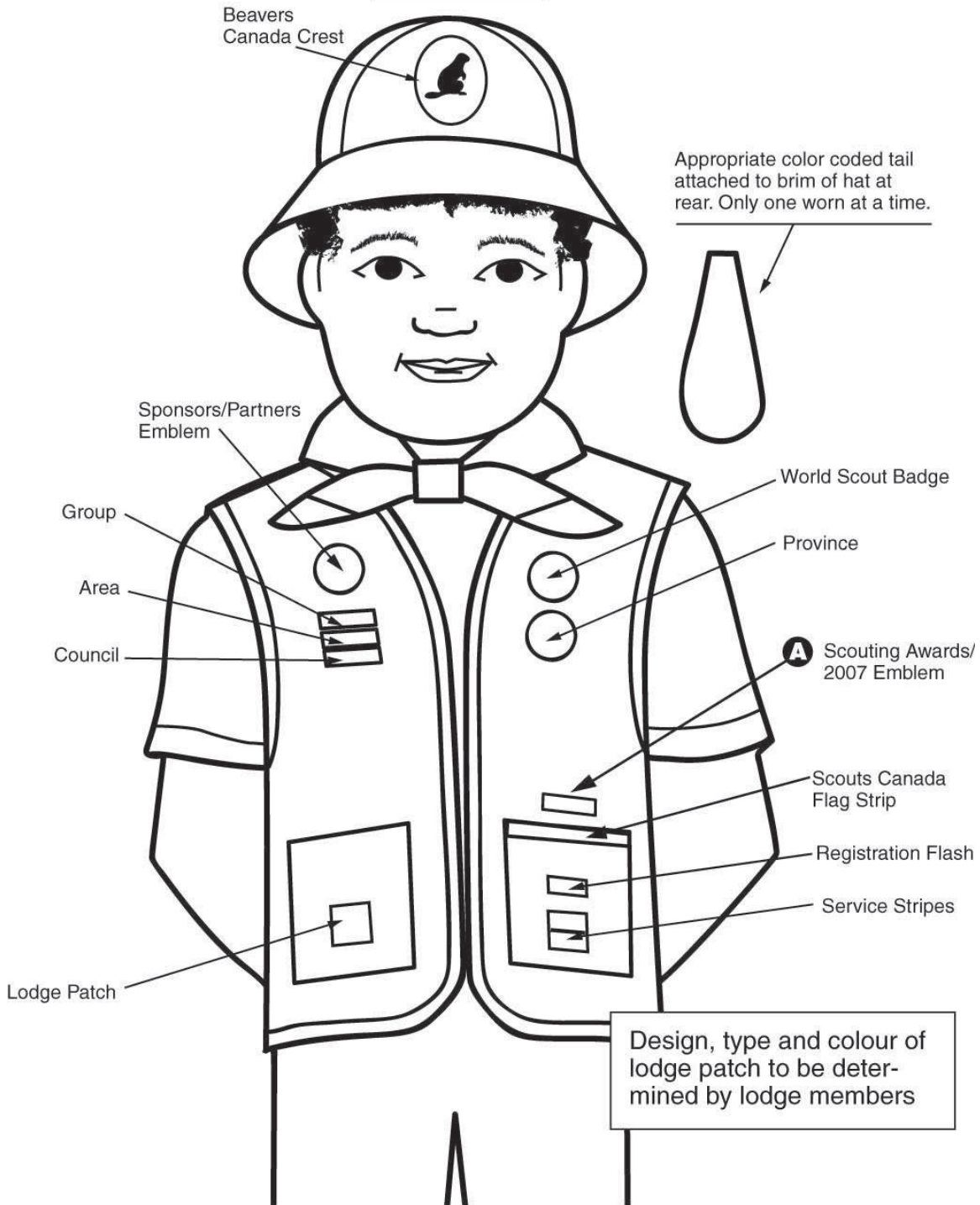
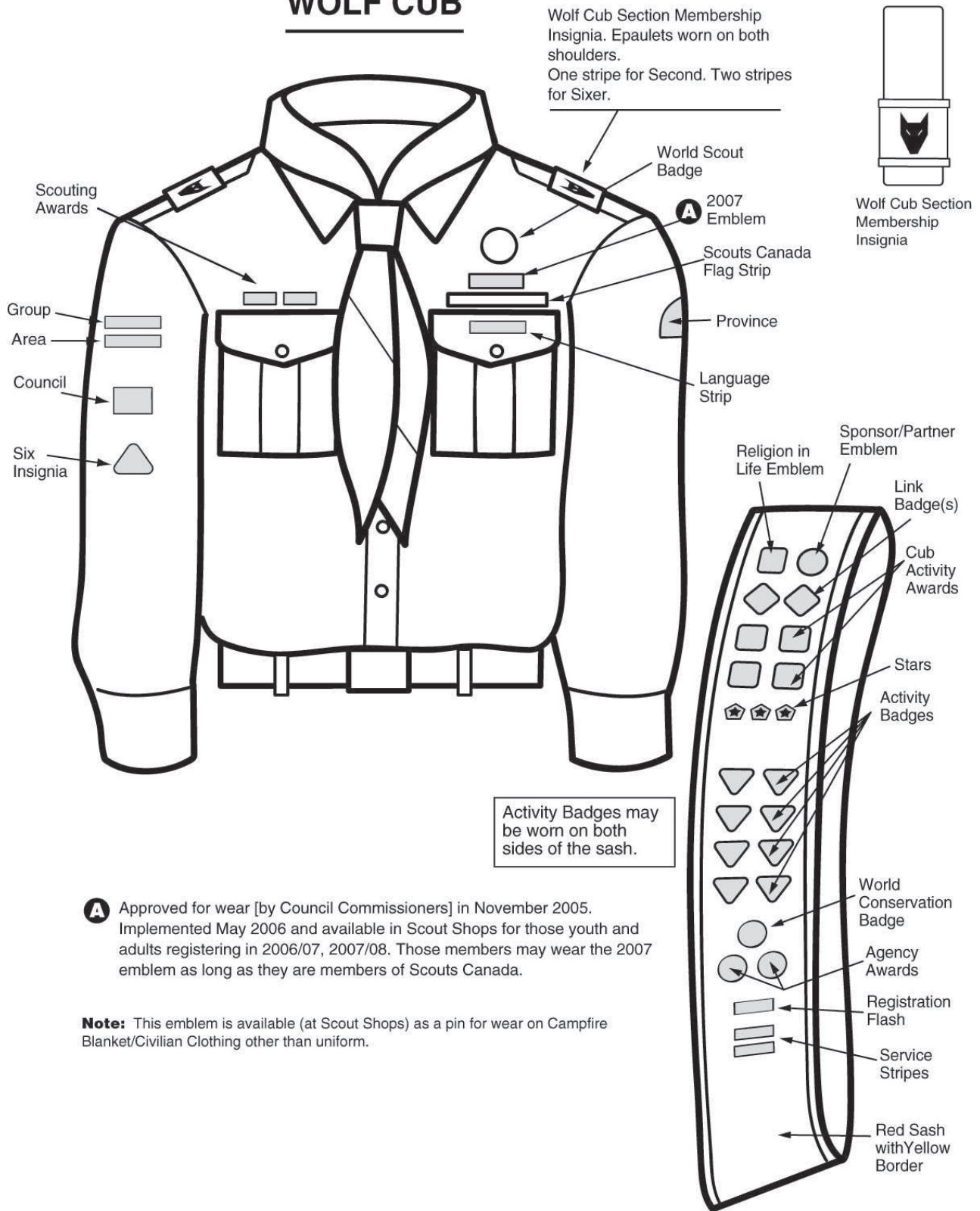


# Beaver

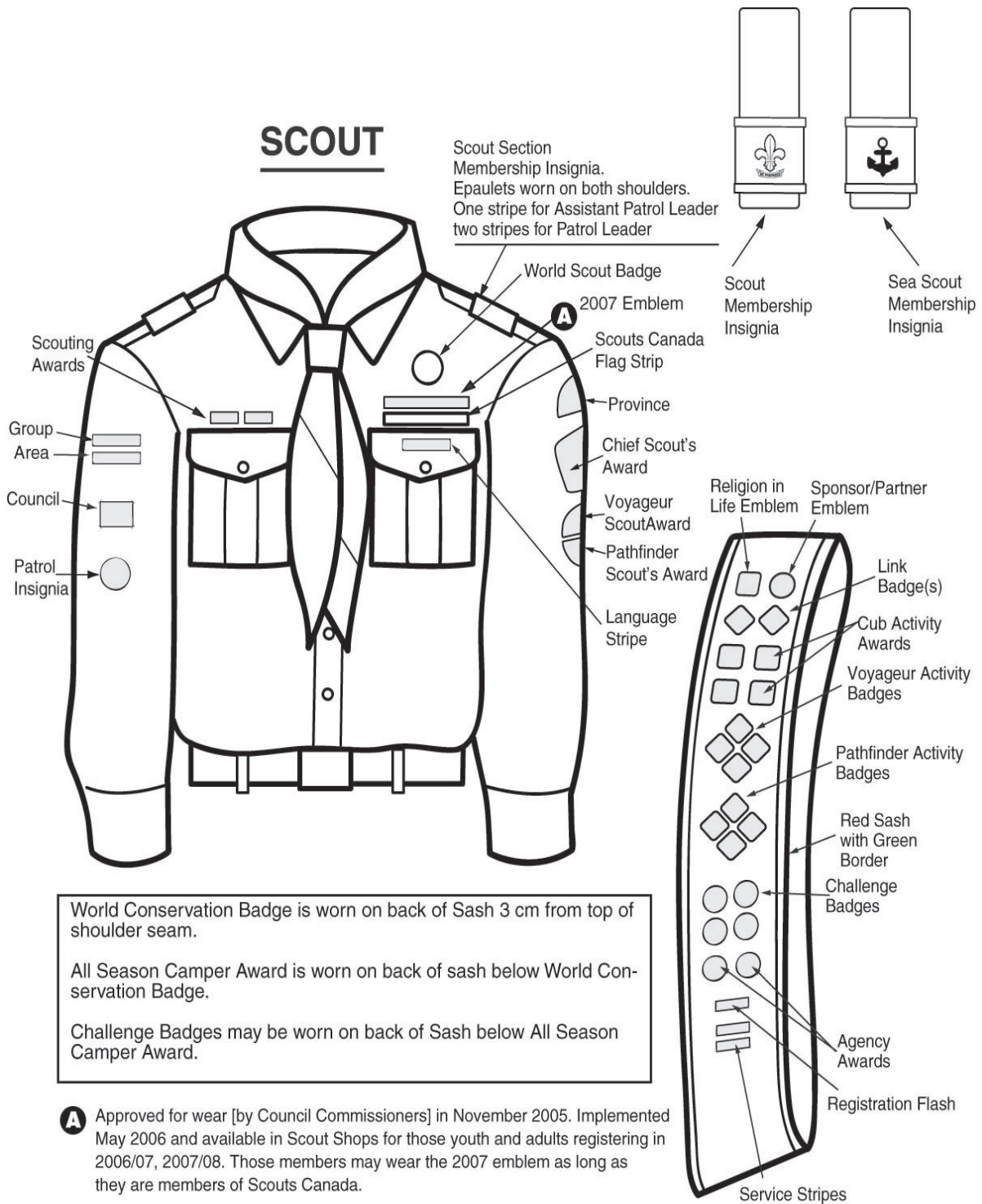


**A** Approved for wear [by Council Commissioners] in November 2005. Implemented May 2006 and available in Scout Shops for those youth and adults registering in 2006/07, 2007/08. Those members may wear the 2007 emblem as long as they are members of Scouts Canada.

# WOLF CUB



# SCOUT



World Conservation Badge is worn on back of Sash 3 cm from top of shoulder seam.

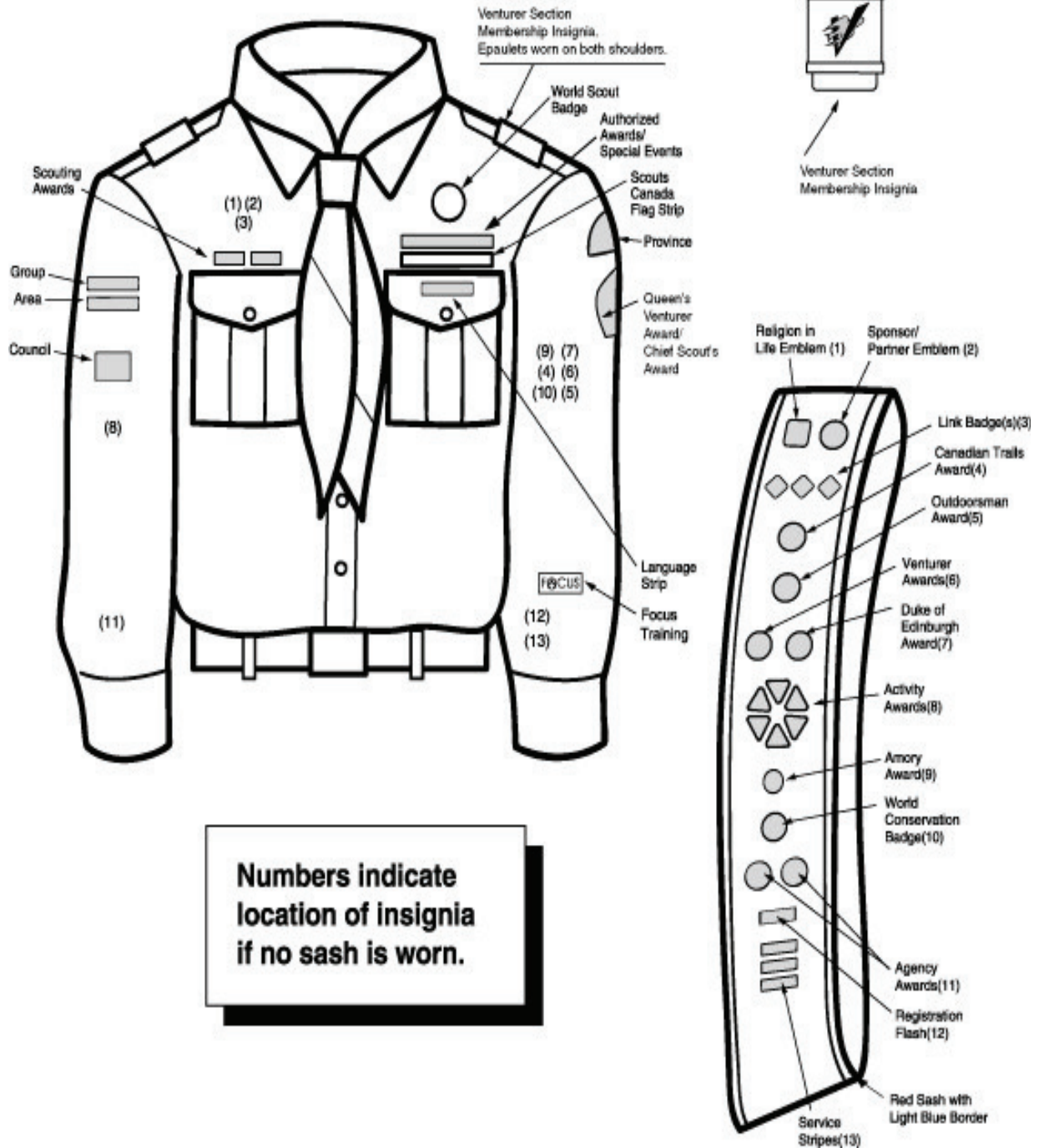
All Season Camper Award is worn on back of sash below World Conservation Badge.

Challenge Badges may be worn on back of Sash below All Season Camper Award.

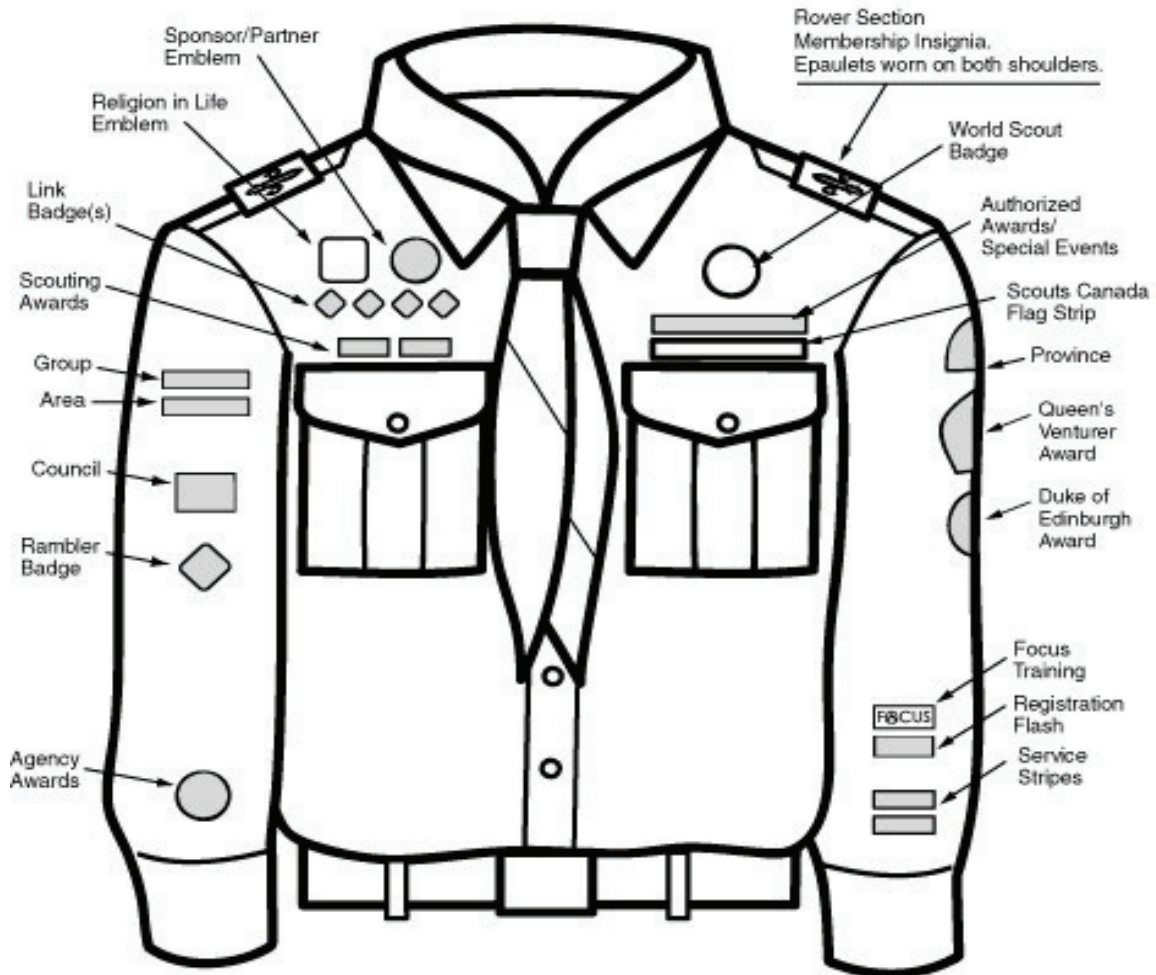
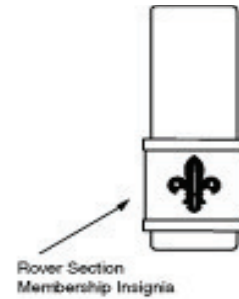
**A** Approved for wear [by Council Commissioners] in November 2005. Implemented May 2006 and available in Scout Shops for those youth and adults registering in 2006/07, 2007/08. Those members may wear the 2007 emblem as long as they are members of Scouts Canada.

**Note:** This emblem is available (at Scout Shops) as a pin for wear on Campfire Blanket/Civilian Clothing other than uniform.

# VENTURER

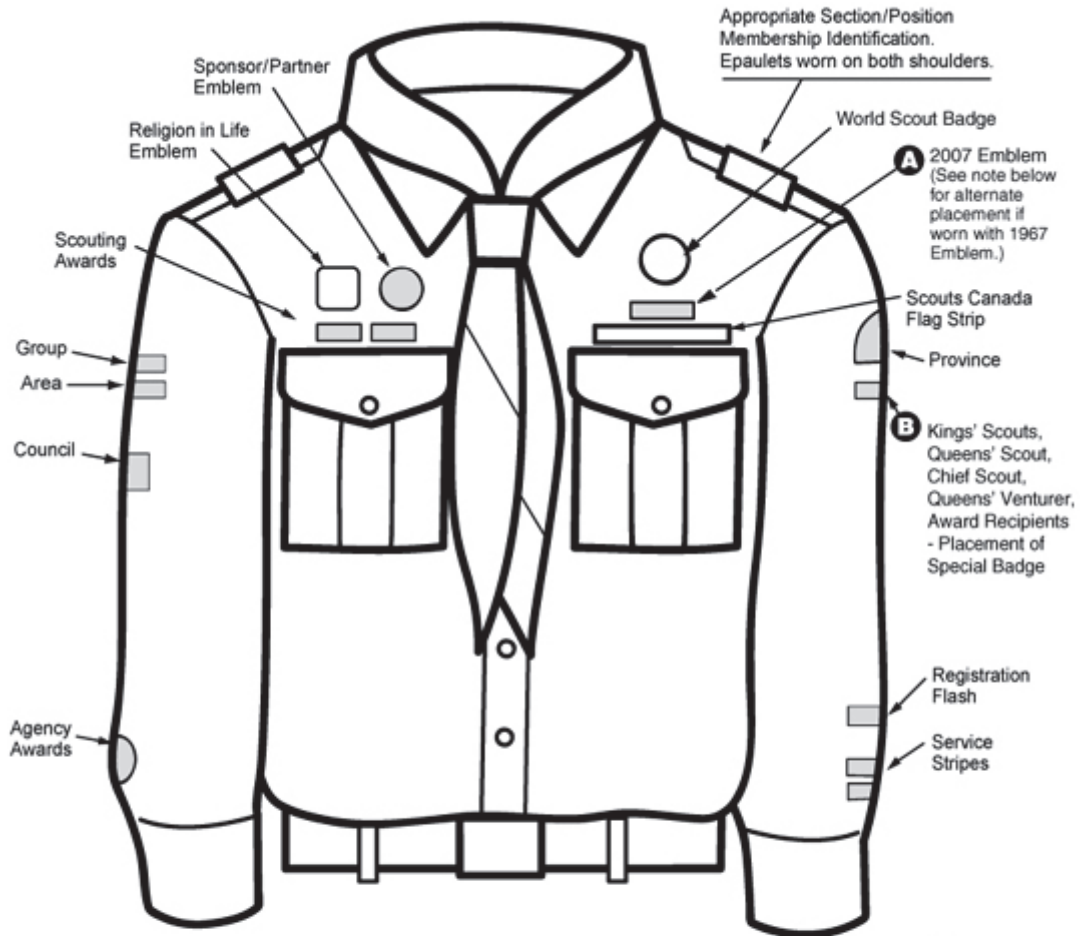


# ROVER



**Rover Progress Thong  
may be worn as an alter-  
native Awards system  
with crew approval.  
It is to be worn around  
left shoulder.**

# ADULT LEADER



**A** Approved for wear [by Council Commissioners] in November 2005. Implemented May 2006 and available in Scout Shops for those youth and adults registering in 2006/07, 2007/08. Those members may wear the 2007 emblem as long as they are members of Scouts Canada.

**Please Note:** In the event the 2007 Emblem is to appear in addition to the 1967 Emblem, it should be placed beside it, on the outside (as shown right).



**B** Approved for wear (by Council Commissioners) in November 2005. Implemented May 2006 and available in Scouts Shops for those Adults who have received Kings' Scout/Queens' Scout/ Chief Scout or Queens' Venturer Award as a youth member.

**Note:** Both emblems **A** and **B** are available (at Scout Shops) in pins for wear on Campfire Blanket/Civilian Clothing other than uniform.